

Elisa & Alexandre

Moodboard

Paris, 4th and 6th of June



Pre Party 04th of June
Old Paris Soirée / Black Tie



Pre Party 04th of June
Old Paris Soirée / Black Tie

Women



Do's

Long, midi or refined short silhouettes.

Velvet, silk, satin, chiffon, lace.

Gloves, pearls, delicate headpieces and elegant stoles are welcome.

Soft sheen and subtle luster are encouraged.

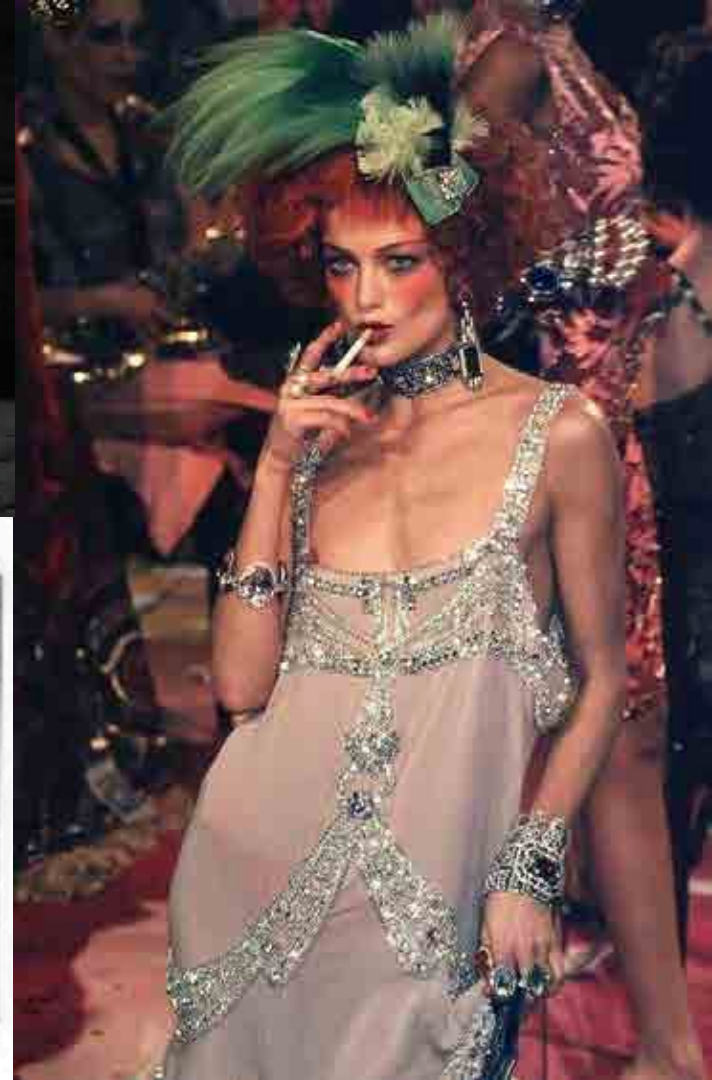
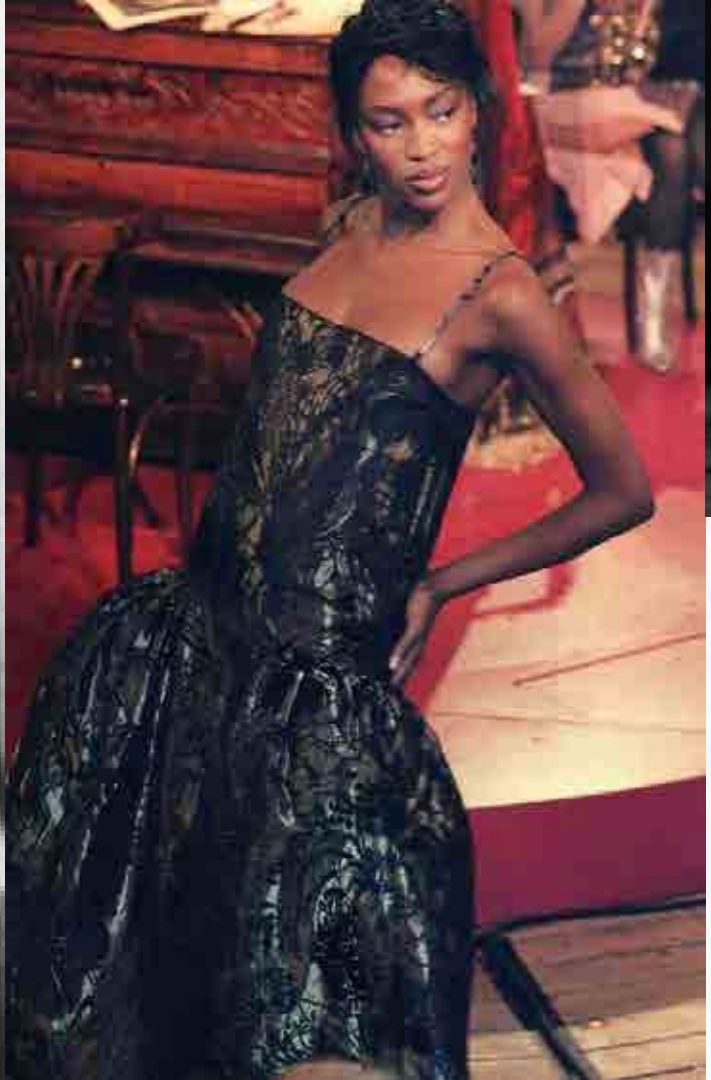
Dont's

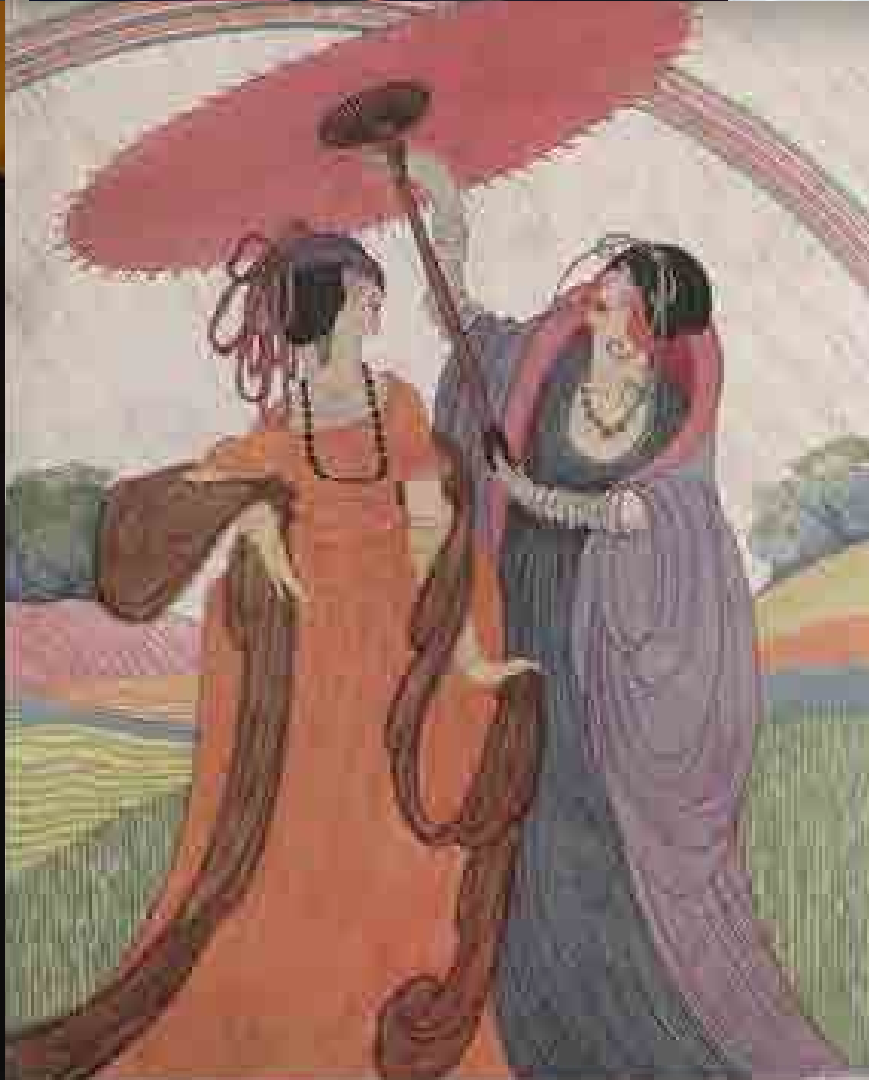
White / Full silver looks

Overly costume interpretations

Pre Party 04th of June
Old Paris Soirée / Black Tie











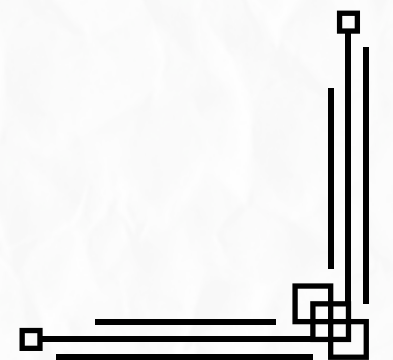
MADAME BUCKY
They may not be as
big as the 1922, but
diamonds—especially
diamonds—especially
with a shimmering
rock are this color.
Classy golden-rod
barn-earring dress.
Frog, Moxy, Tom
Grove, and House of
Lavande jewelry.

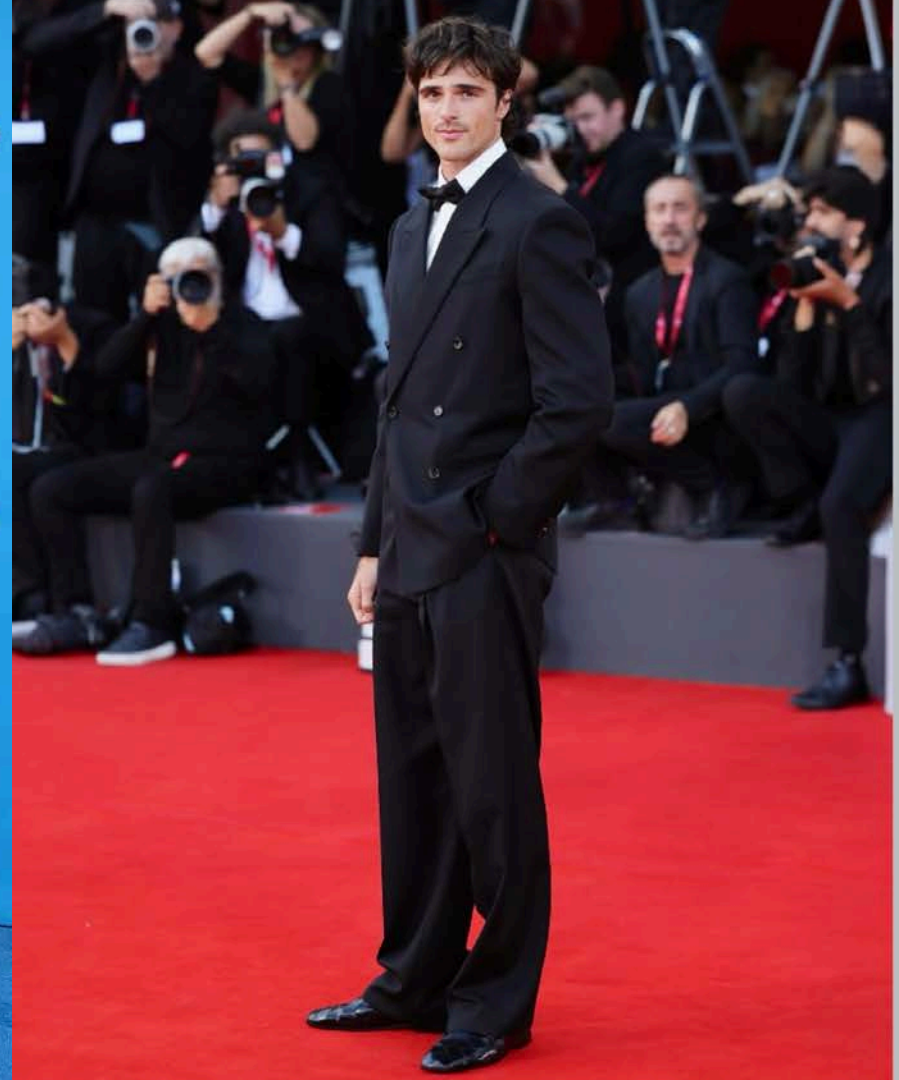


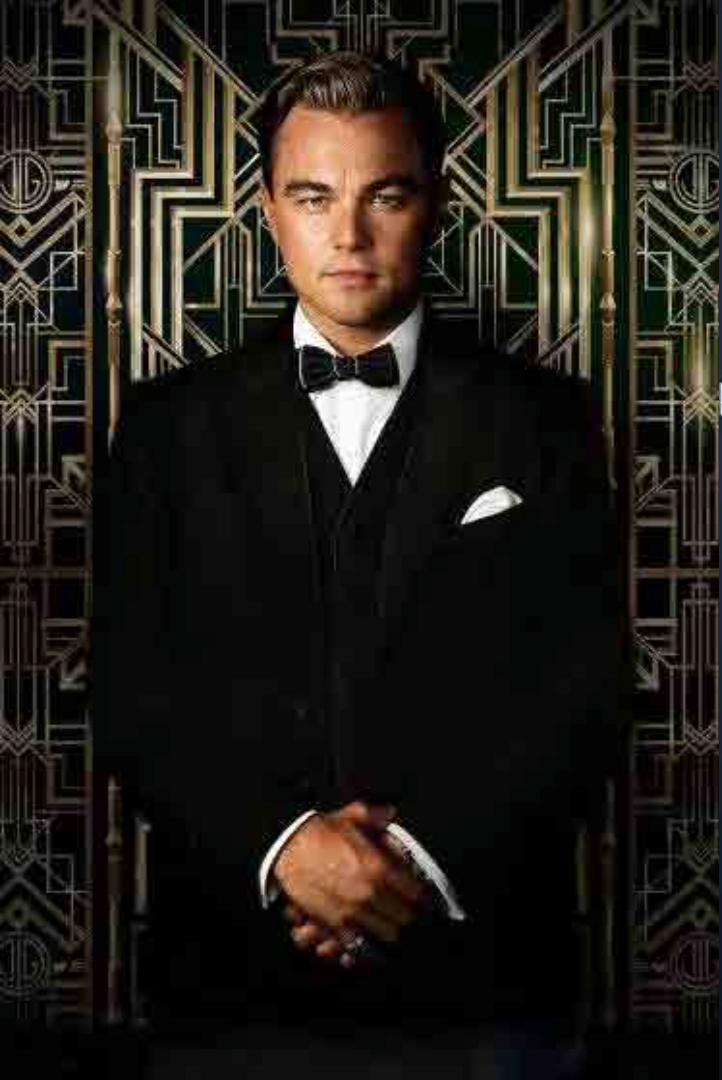
Pre Party 04th of June
Old Paris Soirée / Black Tie

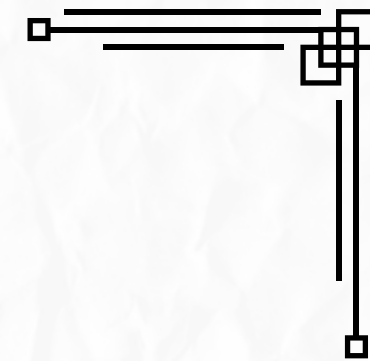
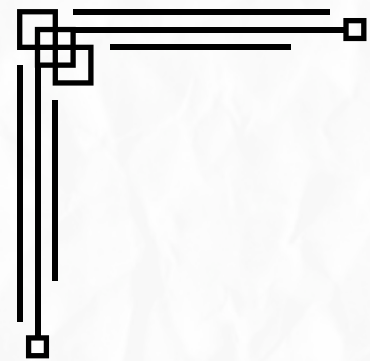
Men

Classic Black Tie



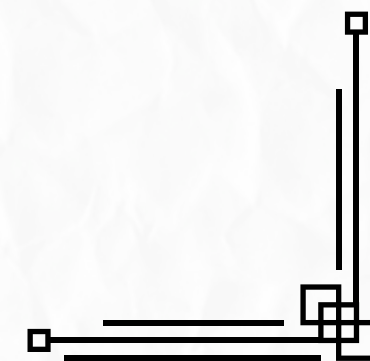
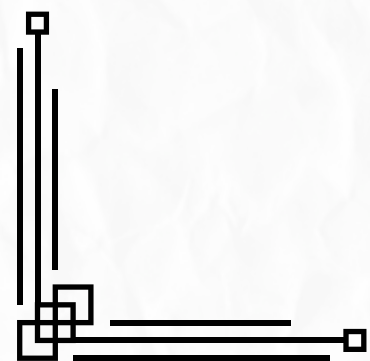






Wedding 06th of June

Enchanted Garden / White Dinner Jacket



Wedding 06th of June
Enchanted Garden / White Dinner Jacket

Women



Do's

Refined silhouettes

Seasonal tones welcome

Preference for block heels

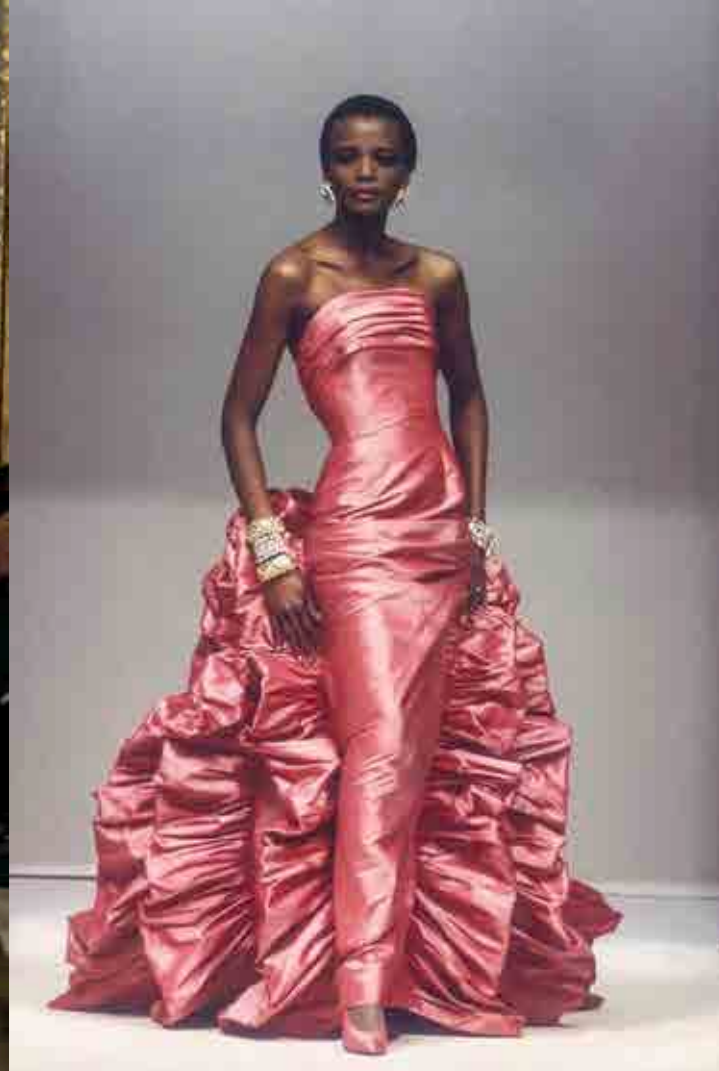
Dont's

No white

No ivory

Wedding 06th of June
Enchanted Garden / White Dinner Jacket















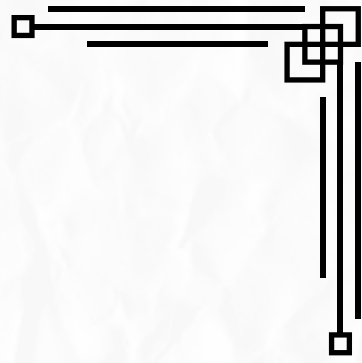
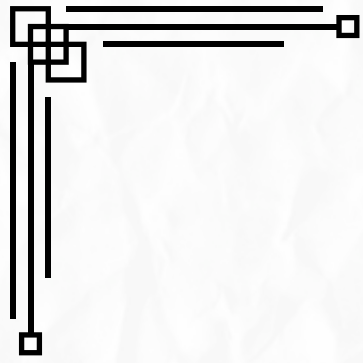
Wedding 06th of June
Enchanted Garden / White Dinner Jacket

Men

White Dinner Jacket







Let's party!

